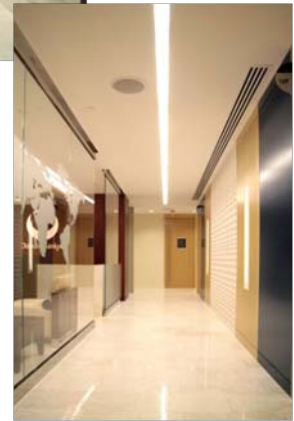


Daiichi Sankyo Pharma - Interior

**Client:**

Daiichi Sankyo Pharmaceutical Development

Facility Type:

Corporate office

Location:

Edison, New Jersey

Size:

22,500 s.f.

Construction Date:

May 2010 - December 2010

Overview:

Shimizu North America performed the design and owner's representation during construction for an expansion of office space.

The project included renovation of main lobby area along with construction of sophisticated and high tech audio visual room.