

# Thai Shimizu

---

## Company Profile



# DREAM TOGETHER WORK TOGETHER ACHIEVE TOGETHER

---

Shimizu Corporation is one of the top construction and civil engineering firms in Japan. It harnesses the latest technology to provide a wide spectrum of services to meet the ever-changing needs of our customers. As a winner of the prestigious "Deming Prize" for quality, its success and its reputation have been built on quality and world-class performance.

Thai Shimizu Co., Ltd. was established in 1984 as a subsidiary of Shimizu Corporation, Japan. Since then, we have been involved in many projects including offices, hotels, data center, institutes, and all types of factories. We take maximum advantage of our vast technical expertise in aspects such as design detail, construction, safety, and work control in creating highly innovative projects in Thailand.

We are proud to be able to contribute to society and participate in the building of this nation's wealth and prosperity. We will continue to build on our core strengths in construction to strive for greater heights of achievement and to spearhead in the field of construction excellence. Our success has been achieved by placing quality and customer satisfaction first, and by combining our entire human, technical, and information resources.

*Hirose Manabu*

Thai Shimizu Co., Ltd.  
President

# SHIMIZU REALIZES PROJECTS IN

## SAME

Same Products  
Same Quality  
Same Service

## IN

## ANY

Anyone  
Anywhere  
Anytime



Person

Tool

Standard

Process





# Table of contents

---

About Thai Shimizu	4
Organization structure	6
Our services & values	7
Our certifications	17
Our achievements	18





# Our vision

## "A smart solution company"

**A company at the forefront of creating harmonious and secure environments**

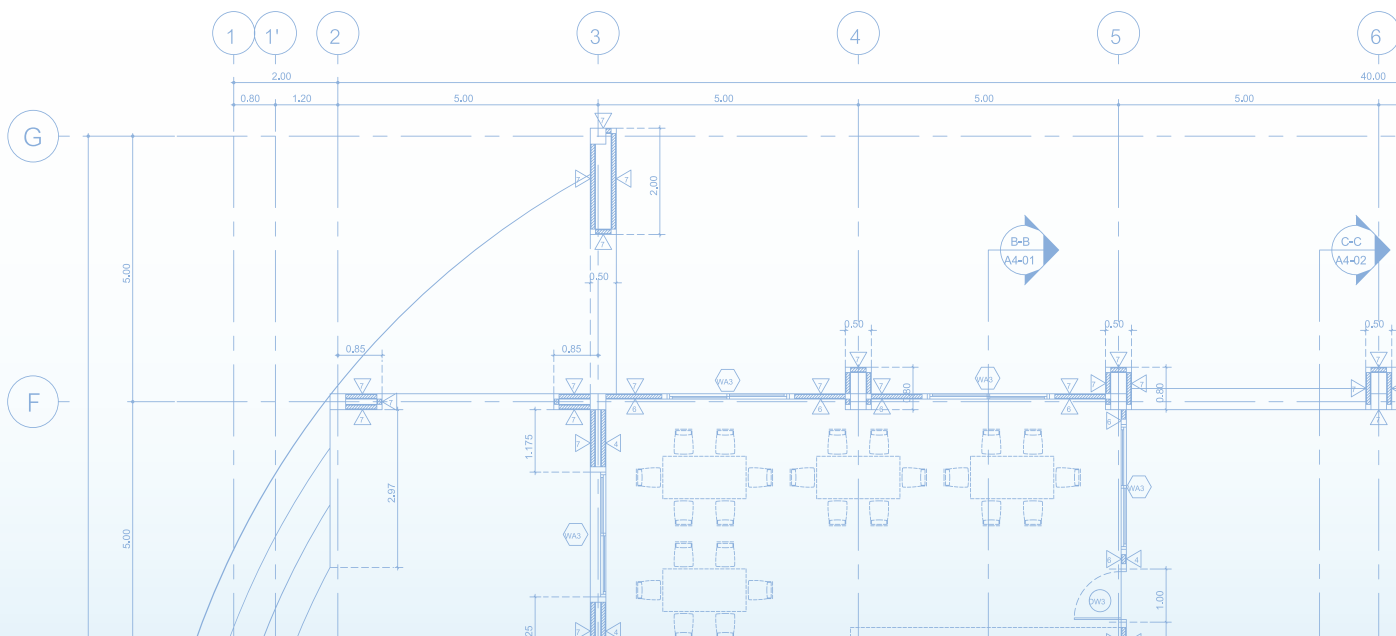
While placing construction work as our core business, we actively engage in investment and management for all stages of the project life cycle, to offer our customers the maximum added value and the best solutions for their needs.

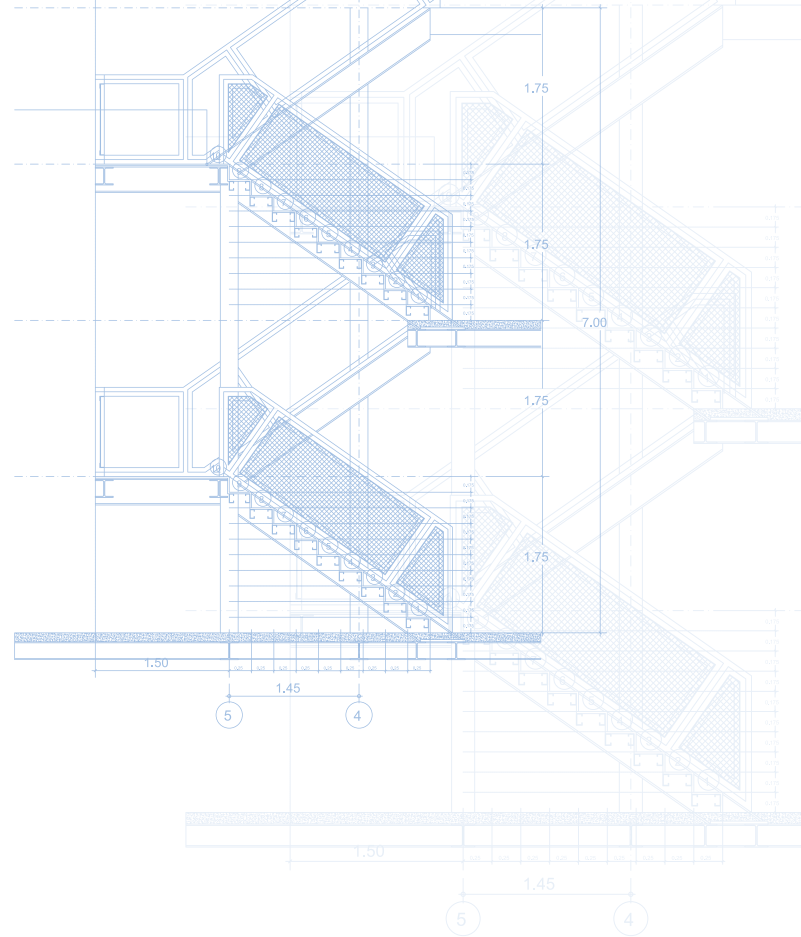
# Our mission

**Realization of an environment for comfortable and safe living**

**Creation of innovation environmental value**

**Achieving harmony with society, architecture and the environment**





## Introduction

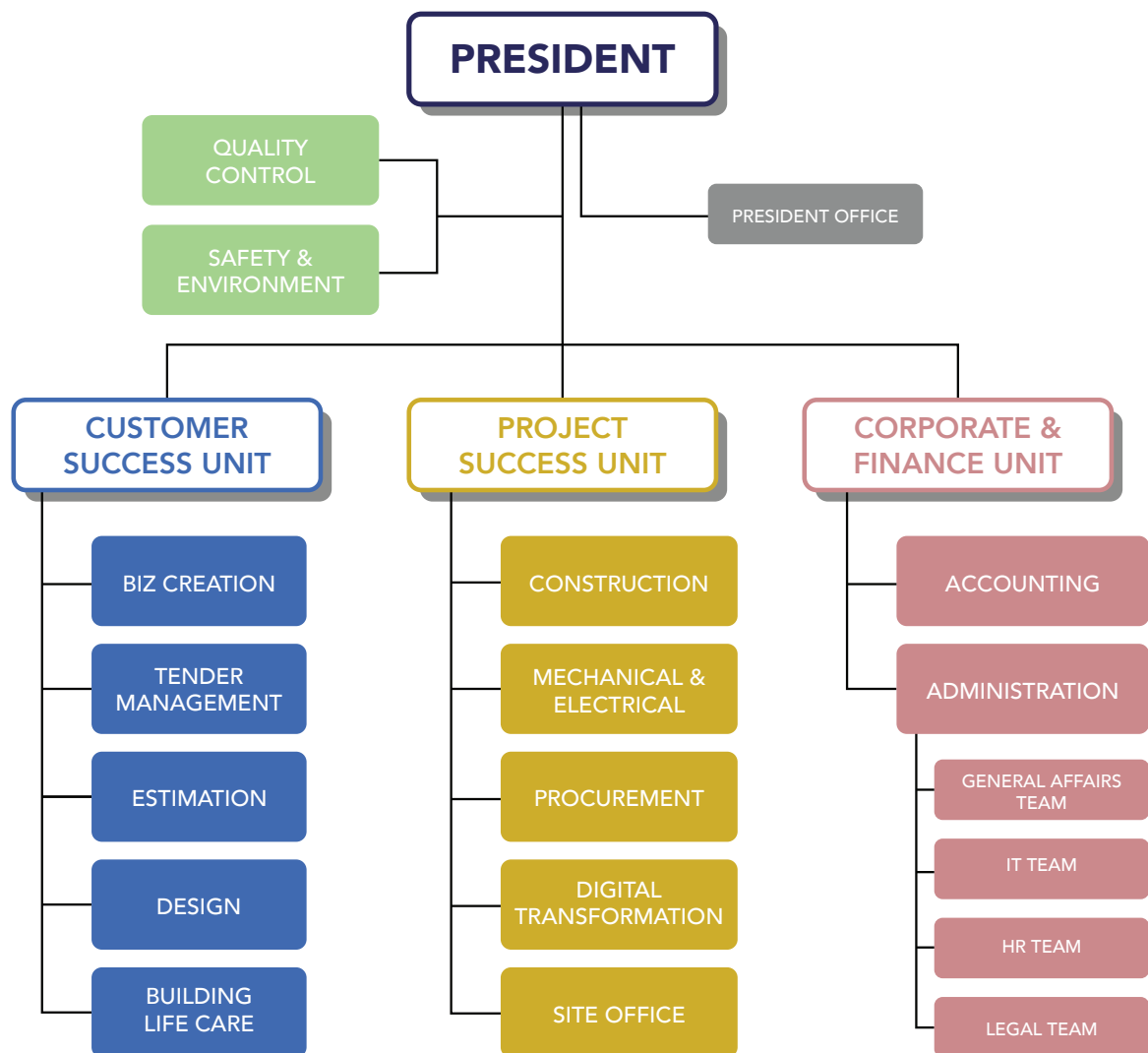
At Thai Shimizu, our focus is on customer satisfaction through high standards, improved services, and advanced technical capabilities.

We bring quality to your projects with thorough preparation and professional engineering, ensuring your needs are met with precision and care.

Our mission is to be your comprehensive partner in every aspect of construction, and delicate to find optimal solutions for all your needs. We aim to incorporate our values and cultural essences into the projects you imagine and create spaces that authentically reflect your aspirations.

# Thai Shimizu organization structure

Thai Shimizu office works closely with strong support from International Division and Headquarter of Shimizu Corporation in Japan. We all work hand in hand in order to assist you to complete your dream projects.







## Our services & values

---

Embarking on a new business comes with a multitude of procedures and challenges, from designing the building to selecting the right site, handling construction, and ensuring proper maintenance. Thai Shimizu excels in addressing all these elements with distinctive workmanship, providing comprehensive solutions for your business venture from start to finish.

# Our services



## Design

Transform your dreams into reality with our innovative design solutions from cutting-edge industrial buildings to the allure of commercial and hospitality spaces. Let us bring your vision to life.



## Engineering & Consultant

Elevate your construction projects with our expert construction engineering and consulting services. Our team brings precision and innovation to every project, ensuring seamless execution from conception to completion.



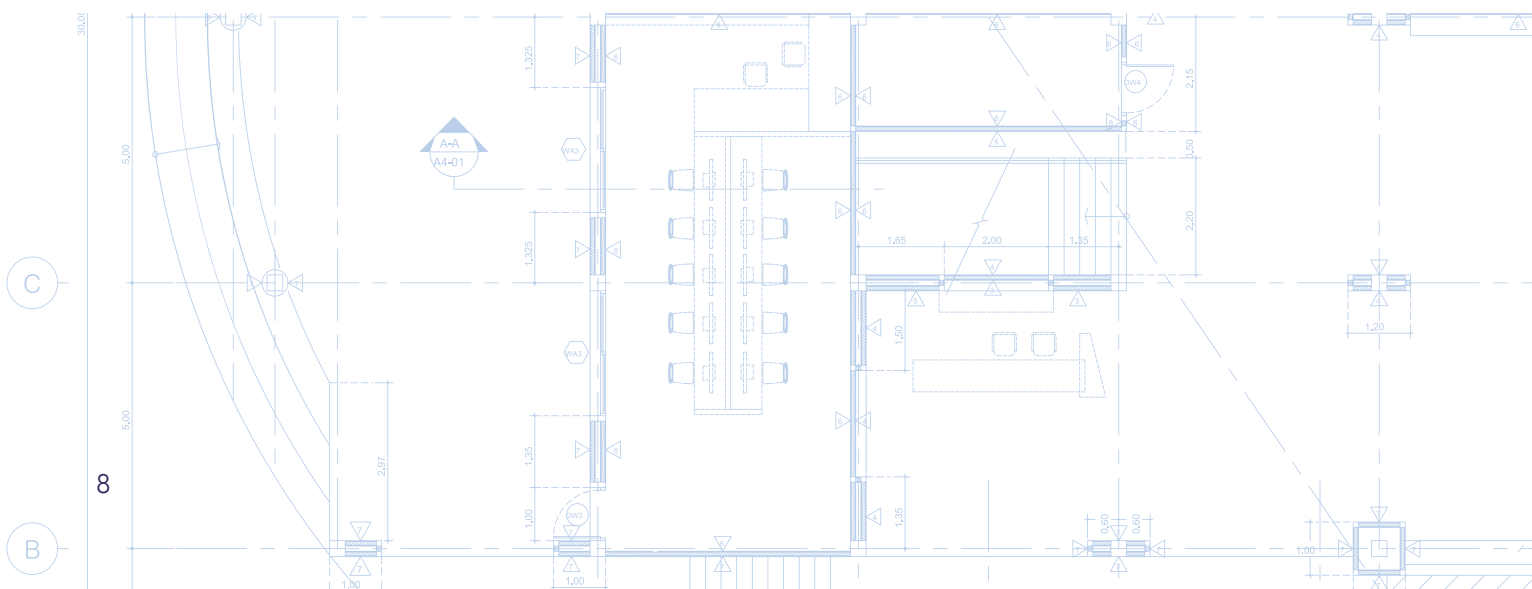
## Construction

We are dedicated to maintaining superior global standards in our construction projects, harnessing the exacting disciplines of Japanese craftsmanship and melding them with the authentic warmth of Thai culture.



## Maintenance

Post-completion, our commitment extends beyond construction – we provide meticulous maintenance services with dedicated touch. Trust us to uphold integrity, ensuring longevity and continue excellence through our attentive maintenance services.



# Our values

---

## Super green building

Shimizu contributes to environment load reduction through the most advanced green building technology development and its implementation.



Our head office in Tokyo was built to be both low in energy consumption and high in comfort, with a conscious effort in reducing our impact to the environment. Utilizing state-of-the-art technology, the result was a disaster-resistant building with CO<sub>2</sub> emission reduction, energy saving lighting, and task & ambient air-conditioning system realized in one "Super green building", a building contributing to the realization of a sustainable society.



# Our values

## Innovation production system

Shimizu utilizes cutting-edge information technology in its advanced construction processes.

### Full use of BIM (Building Information Modeling) throughout design & construction

#### Design Stage

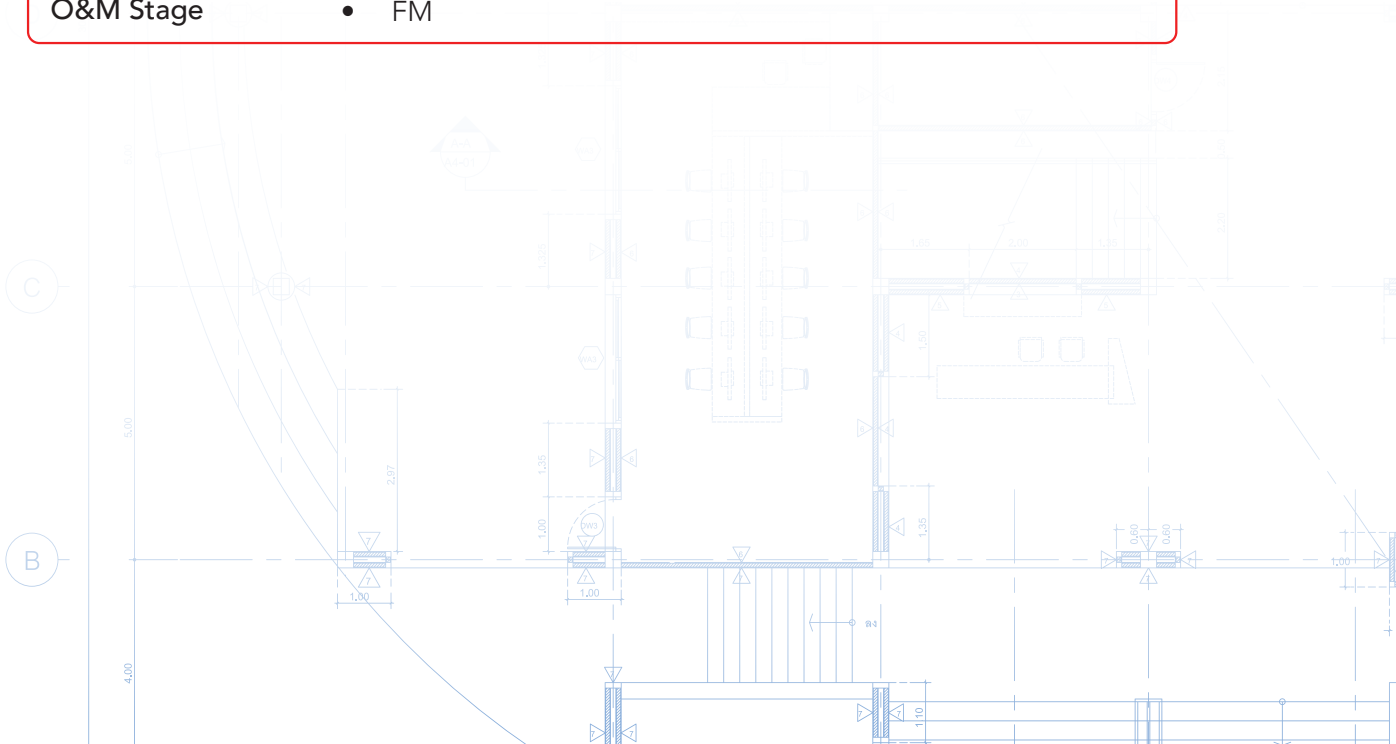
- Design study
  - Structural analysis
  - Submit BIM model at building permit application
- Integration of design, structure and MEP work
  - Clash detection
  - Detailed study of the interface of elements
  - Quantity calculation of materials
  - Comprehensive study on complex shape of the building

#### Construction Stage

- Completion of shop drawings
- Process management
- Consideration of temporary work plans
- Identification and coordination of difficulties in construction
- Visual explanation of works to workers
- Smooth response to design changes

#### O&M Stage

- FM

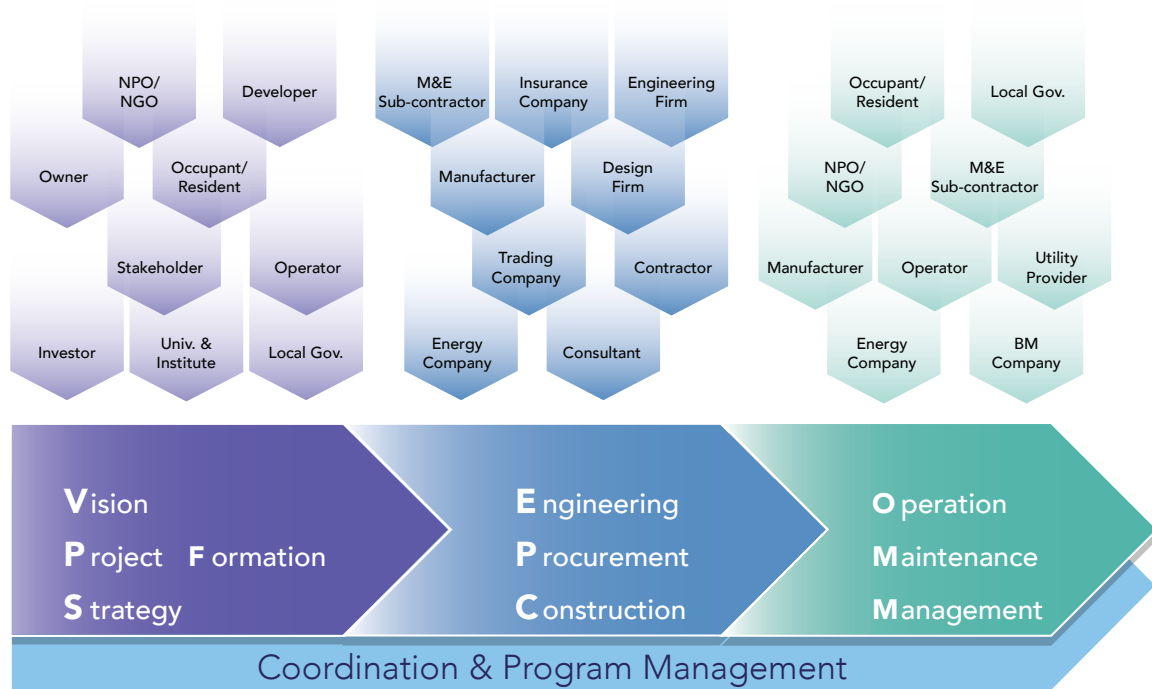


# Our values

## All stages, wide field

Our business starts from building a vision with customers and forming a strategy for the project.

From there, we assist in selecting the construction site, FS (Feasibility Study), administrative support, design, infrastructure development, construction, and maintenance. We promote and support the smooth flow of the project taking into account circumstances of each region.



# Our values

## Design build

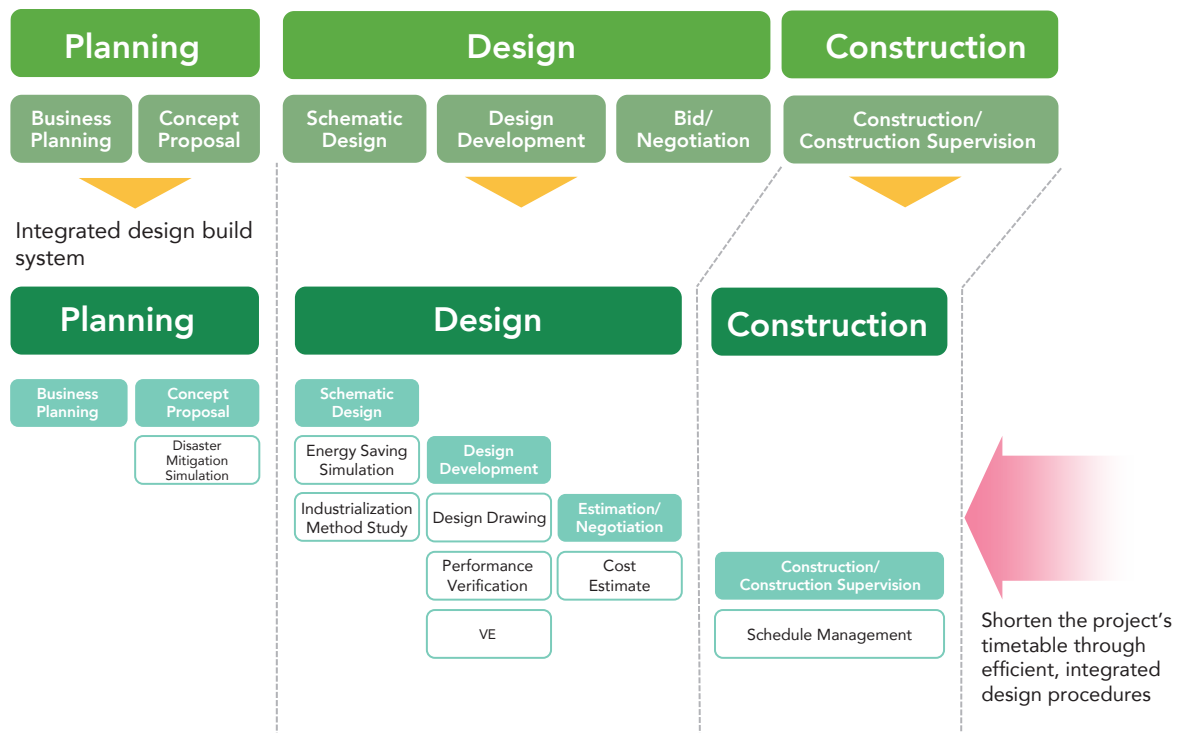
Shimizu contributes to the customers' business value by our integrated design build production methods.

### Benefits of integrated design build production

Solution	Quality	Speed	Price	Responsibility
Using our rich experience of construction projects, we can optimally plan and propose the design and construction while looking ahead to the life cycle of the building	By linking construction and design from the initial design phase, we will be able to ensure optimal building quality and performance (environmental performance, etc.).	By integrating design and build, coupled with our accumulated know-how, it is possible to accelerate the commencement of the customers' business.	From the early design phase to the latter stages, we take into consideration numerous construction methods to make the best offer tailored to the customer's budget.	As design, construction and aftercare now comes from a single window system, information management and responsibility is unified; every aspect of the project can be handled quickly and precisely.

### Integrated design build to reduce delivery time

Conventional contract system





# Our values

---

## Factory & plant engineering

Shimizu has extensive experience in plant engineering. Our strength is providing the optimal solution from a wide range of perspectives to suit customers' needs.

## Production facility construction

- ▶ Pharmaceuticals factory
- ▶ Chemical factory
- ▶ Electronic/Semiconductor/Data center
- ▶ Food/Beverage factory
- ▶ Laboratory
- ▶ Logistics facility

## Full turn-key and life cycle approach



## Responding to local conditions

Drawing upon a wealth of international experience in quickly responding to local situations, we can provide the most suitable facilities for specific business needs.

# Our values

---

## Building management

Shimizu strives to maintain facilities so that they will remain safe, secure and comfortable into the future. We provide one-stop service in accordance with the life cycle stages of the building.



### Overall service on facility operations management

- ▶ Comprehensive management of equipment, cleaning, and security services
- ▶ Provide for safety and create an optimal environment

### Supported by professional O&M engineers

- ▶ Utility cost reduction by optimal energy and resource saving strategies
- ▶ Practical maintenance planning and budget control
- ▶ Deterioration diagnosis by experts (every 10 years)
- ▶ Energy diagnosis
- ▶ Due diligence (Engineering report)
- ▶ LCC proposal

### Providing high-quality services

- ▶ Management categories:
  - (1) Facility and maintenance management
  - (2) Cleaning management
  - (3) Safety and security
- ▶ Quality assessment (Inspection)
- ▶ Prompt tenant correspondence



## Shimizu Corporation's Institute of Technology

Established in 1944 as a first in the industry, the Shimizu Institute of Technology has played a major role in the advancement of construction technology.

Today's world demands safety and security in earthquakes, typhoons, torrential rains, and other natural disasters; building people-friendly facilities and communities where anyone can lead a healthy, comfortable life; reducing the burden that global warming impose on the environment and conserving ecosystems; and innovations in production using robots and AI technology. Initiatives targeting the changes caused by infectious diseases are also necessary.

To achieve these goals, the Institute of Technology continues to develop new technologies and pursue innovation and new values 10 years ahead of the times.

In addition to being a research and development base, the Institute of Technology also functions as site for testing to verify technology developed, and to disseminate information on our cumulative research to society.

We develop new technologies and solutions to create new value and contribute to a safe, healthy and sustainable future for everyone.





## Innovation ecosystem novare

Shimizu Corporation's Smart Innovation Ecosystem Novare represents a significant investment in the future. Opened in September 2023, this one-of-a-kind facility fosters a collaborative environment dedicated to driving innovation across business structures, technological advancements, and talent development.

Novare houses a research facility (Novare Lab) to explore cutting-edge solutions, a training facility (Novare Academy) to equip future generations with the necessary skills, and historical archives (Novare Archives) to preserve the company's rich heritage. The incorporation of a renovated residence (Former Shibusawa Residence) further emphasizes the company's commitment to both progress and preserving its history.

By facilitating knowledge exchange and collaboration, Novare serves as a hub for generating new ideas and nurturing talent capable of contributing to a resilient, inclusive, and sustainable society. This aligns with Shimizu Corporation's long-term vision of becoming a "Smart Innovation Company" that creates lasting value.

# Our certifications

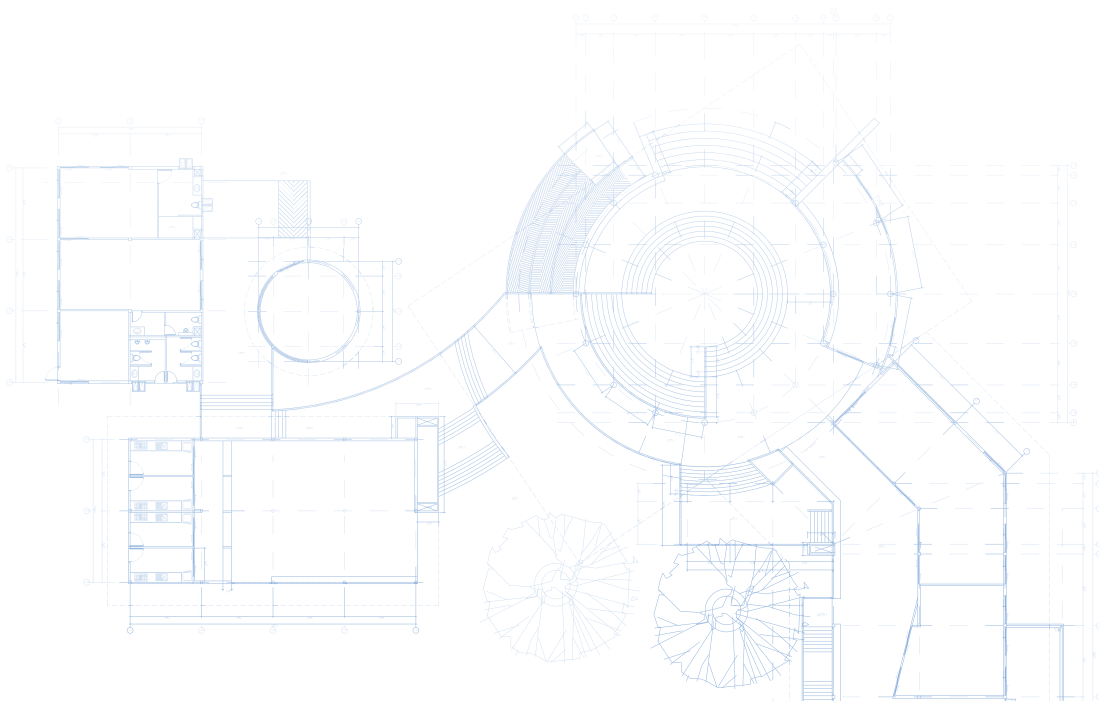
---

Thai Shimizu holds three ISO certifications:

- ▶ Quality Management System
- ▶ Environmental Management System
- ▶ Occupational Health and Safety Management System

to bear testimony to how quality, integrity, and responsible business take center stage in our operations.

**We possess an advanced classification in tier-three for our integrated works services.**





## Our achievements

---

## Eastern Seaboard I.E.

- Aoyama Thai
- Bridgestone Metalpha
- Cataler (Thailand)
- G-Tekt Eastern
- General Motors (Thailand)
- Logistics Alliance (Thailand)
- Maruyasu Industries (Thailand)
- Nisshinbo Somboon Automotive
- Piolax (Thailand)
- Sekisiu S-LEC (Thailand)
- Suruga (Thailand)
- Takao Eastern
- Thai G&B Manufacturing
- Zexel Clutch (Thailand)

## Amata City I.E.

- Bridgstone Specialty Tire Manufacturing (Thailand)
- Dowa Metal & Mining (Thailand)
- Idemitsu Lubricants (Thailand)
- JNC Nonwovens (Thailand)
- Kinkiyohin (Thailand)
- Kyoden Products (Thailand)
- Mango BKK061
- Nissin Manufacturing (Thailand)
- NM Material (Thailand)
- Sumitomo Rubber (Thailand)
- Tokai Rika (Thailand)
- Yokohama Tire Manufacturing (Thailand)

## WHA-ESIE 1

- Clarion Asia (Thailand)
- Thai Okawa
- Thai Kobelco Construction Machinery

## Siam Eastern I.P.

- Atsumitec (Thailand)
- Siam Goshi Manufacturing
- Siam Nippon Steel Pipe
- Thai Meira

## Rojana Rayong I.P.

- Nachi Technology (Thailand)
- SEI Brake System (Thailand)

## IRPC I.P.

- Ube Nylon (Thailand)

## Asia I.E.

- Asia Silicones Monomer



Aoyama Thai



Dowa Metal & Mining (Thailand)



Takao Eastern



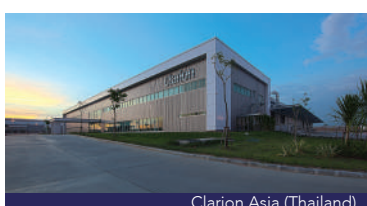
Cataler (Thailand)



Maruyasu Industries (Thailand)



Thai Okawa



Clarion Asia (Thailand)



Suruga (Thailand)



Yokohama Tire Manufacturing (Thailand)



# Construction Achievements: Chon Buri/ Prachin Buri Province

## Amata City I.E.

- Aiphone Communications (Thailand)
- Amagasaki Pipe (Thailand)
- Analog Devices (Thailand)
- Daiho (Thailand)
- Dynachisso Thai
- Denso (Thailand)
- Hanwa Steel Service (Thailand)
- KYB Steering (Thailand)
- MHI-Pornchai Machinery
- Mitsubishi Turbocharger Asia
- Neis Trading (Thailand)
- Niles (Thailand)
- Nippon Paint (Thailand)
- PCM Processing (Thailand)
- S. A Precision
- Siam Siam International Group
- Thai Matto NS
- Thai NOK
- Toyoda Gosei (Thailand)
- Tsuchiya (Thailand)
- Todenko (Thailand)
- TTK Logistics (Thailand)
- Usui International Corporation (Thailand)

## 304 I.E.

- CMK Corporation (Thailand)
- Oji Label (Thailand)
- Oji Paper (Thailand)
- Siam Aisin
- Thai GMB Industry
- Toshiba Semiconductor (Thailand)
- Y-TEC

## Rojana Prachin Buri

- Honda Automobile (Thailand)

## Laem Chabang I.E.

- FGA (Thailand)
- Fujitsu General (Thailand)
- Mitsubishi Motors (Thailand)
- NYK Auto Logistics (Thailand)



Analog Devices (Thailand)



CMK Corporation (Thailand)



Daiho (Thailand)



Hanwa Steel Service (Thailand)



Mitsubishi Turbocharger Asia



Niles (Thailand)



Nippon Paint (Thailand)



Oji Paper (Thailand)



Thai GMB Industry



Usui International Corporation (Thailand)



Y-TEC



# Construction Achievements: Chachoengsao/ Ayutthaya Province

## Gateway City I.E.

- Dowa Metaltech (Thailand)
- Epson Toyocom (Thailand)
- Isuzu Motors Company (Thailand)

## Wellgrow I.E.

- Proctor & Gamble Trading (Thailand)
- Takata-TOA

## Chachoengsao Province

- Sharp Appliances (Thailand)
- Thai Tabuchi Electric
- Toyota Technical Center Asia Pacific (Thailand)

## Ayutthaya Sena

- Nipro (Thailand)

## Ayutthaya Wang Noi

- Citizen Machinery Asia
- Royal Time Citi
- Thai Yokorei

## Rojana I.P. - Ayutthaya

- Citizen Seimitsu (Thailand)
- Citizen Watch Manufacturing (Thailand)
- F-Tech MFG. (Thailand)
- HMP (Thailand)
- Honda Automobile (Thailand)
- Keihin Auto Parts (Thailand)
- Nakashima Rubber (Thailand)
- Nikkan (Thailand)
- Nitto Denko Material (Thailand)
- NMB-Minebea Thai

## Hitech I.E.

- Mizuho (Thailand)

## Bangpa-In I.E.

- Sekisui Polymatech (Thailand)



Citizen Machinery Asia



Dowa Metaltech (Thailand)



Epson Toyocom (Thailand)



F-Tech MFG. (Thailand)



Nitto Denko Material (Thailand)



Sharp Appliances (Thailand)



Takata-TOA

## Construction Achievements: Bangkok Suburbs & Other Provinces

### Samut Prakarn Province

- Hexa Color (Thailand)
- Isuzu Motors (Thailand)
- Michelin Siam
- Nissan Motor (Thailand)
- Toyota Motor (Thailand)
- Toyota Motor Asia Pacific Engineering & Manufacturing
- Thai Auto Conversion

### Bangpoo I.E.

- Central Metals (Thailand)
- Thai Nisshin Seifun
- Thai Nisshin Technomic

### Bangplee I.E.

- Kohbunshi (Thailand)

### Suranaree I.Z.

- Tarutani Pack (Thailand)

### Nakhon Ratchasima Province

- Casio (Thailand)
- Funai (Thailand)

### Navanakorn I.Z.

- Gamakatsu International
- Nichirin (Thailand)
- Siam Thermo-Tech

### Chumnumsap I.P.

- Fuji Electric Manufacturing (Thailand)

### Pathum Thani Province

- Able Progress Industry

### Nakhon Pathom Province

- Sharp Manufacturing (Thailand)

### Bangkadi I.E.

- Toshiba Semiconductor (Thailand)

### Nong Khae I.E.

- Asian Best Chicken
- Michelin Siam
- Nitto Fuji International (Thailand)



Nichirin (Thailand)



Siam Thermo-Tech



Tarutani Pack (Thailand)



Toyota Motor (Thailand)

### Office

- Shiseido (Thailand)
- Tri Petch Isuzu Sales HQ

### Commercial

- Isetan (Thailand)
- Toyota Motor (Thailand)

### Residence

- Prasanmitr Thani Enterprise
- Floral Chiangmai

### Laboratory

- Overseas Merchandise Inspection

### School

- Thammasat University

### Civil Work

- Suvarnabhumi International Airport  
(passenger terminal elevated  
access of landside road systems)  
(elevated frontage roads)

### Hotel

- Nishi-Nippon Railroad
- Nishitetsu Hotel Croom Bangkok Silom
- Solaria Nishitetsu Hotel Bangkok



Nishitetsu Hotel Croom Bangkok Silom



Prasanmitr Thani Enterprise



Shiseido (Thailand)



Solaria Nishitetsu Hotel Bangkok



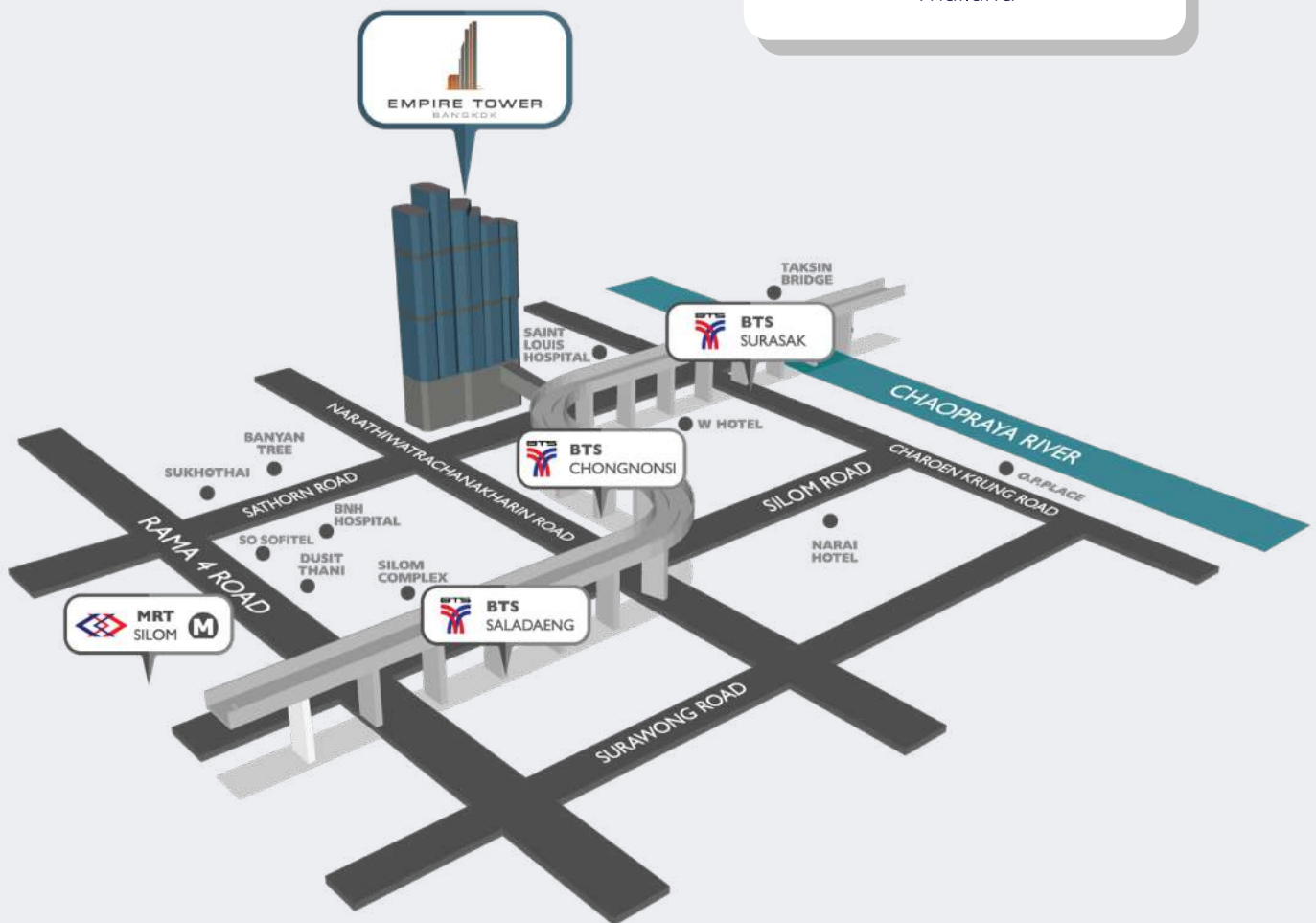
Floral Chiangmai

# Office location



## Address

Unit 2301, 23<sup>rd</sup> Floor,  
Empire Tower 1,  
South Sathorn Road,  
Yannawa, Sathorn, Bangkok 10120,  
Thailand



TEL: +66-2230-0333 FAX: +66-2230-0303

E-mail: [bd-tsmz@shimz.biz](mailto:bd-tsmz@shimz.biz)



**DREAM  
TOGETHER  
WORK  
TOGETHER  
ACHIEVE  
TOGETHER**

**Shimizu Corporation Headquarters**

〒104-8370  
Tokyo Prefecture Chuo Ward Kyobashi Nichome 16-1  
TEL: +81-(0)3-3561-1111  
<http://www.shimz.co.jp/>  
International Division  
Business Development Department  
TEL: +81-(0)3-3561-4360  
FAX: +81-(0)3-3561-8680

**Bangkok Office**

Unit 2301, 23rd Floor, Empire Tower 1  
South Sathorn Road, Yannawa, Sathorn,  
Bangkok 10120 THAILAND  
Business Creation Department  
TEL: +66-2230-0333  
FAX: +66-2230-0303  
E-mail: [bd-tsmz@shimz.biz](mailto:bd-tsmz@shimz.biz)